

Missing

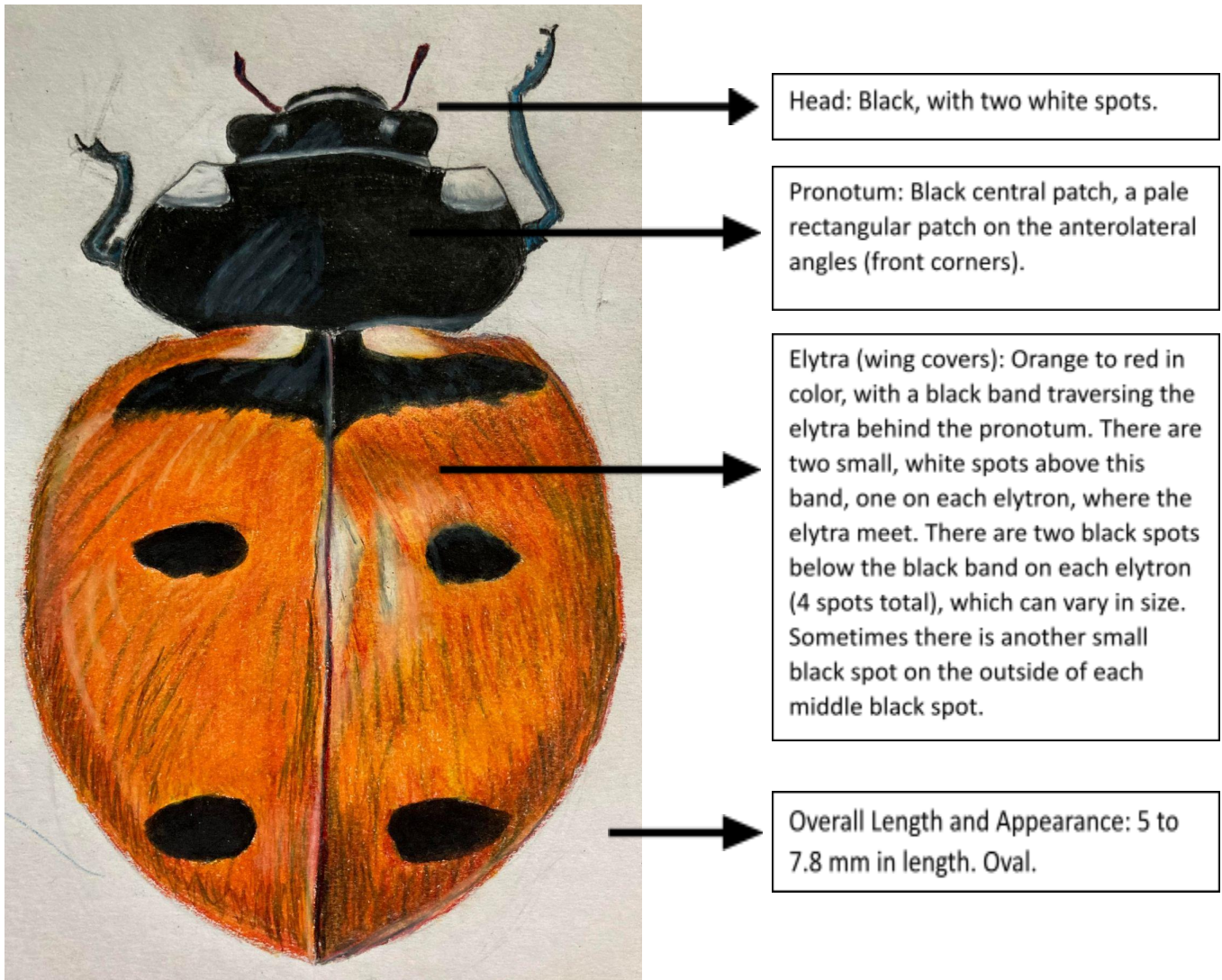
Transverse Lady Beetle (*Coccinella transversoguttata*)

Reward

Gratitude and thanks from the VAL team!

Last Seen: 1986 – Salisbury, VT

Habitat: Habitat generalist, utilizing gardens, parks, forests, meadows, riparian zones, and agricultural crops.

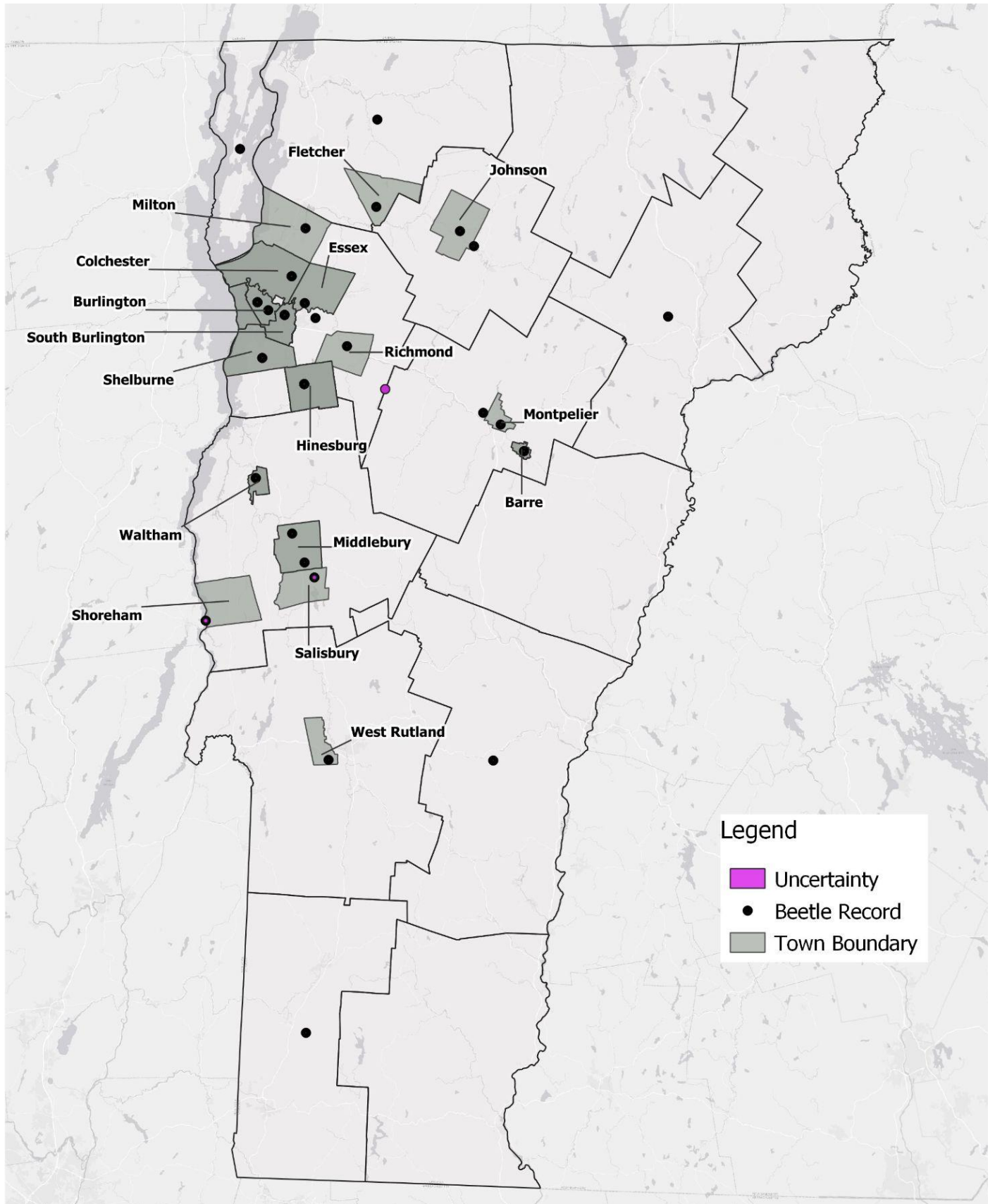


Particularly easy to confuse with the Three-banded Lady Beetle, separated by the pronotum markings (the 3-banded has a pale margin across the front, connecting the pale patches). Also confused with Mountain, Hieroglyphic, and 5-spotted Lady Beetle.

If found:

Photograph the head, pronotum, and wing covers. Make sure you get different angles of the pronotum and wing covers so the head, pronotum, and elytral markings are clearly visible.

Map of Historic Records



List of Historic Records: Location and Date

Town	Month	Year	# Records	Locality	Coordinates	Uncertainty (m)
Barre	September	1971	1			
Barre	August	1970	1			
Burlington	September	1979	1			
Burlington	October	1978	4			
Burlington	September	1978	1	Centennial Woods	44.48379, -73.18915	820
Burlington	April	1976	1			
Burlington	November	1972	3			
Burlington	September	1971	2			
Burlington	August	1970	1			
Colchester	August	1976	4			
Duxbury	May	1971	1	Camel's Hump	44.32004, -72.8865	1000
East Middlebury	July	1968	1			
Essex Junction	October	1978	1			
Essex Junction	September	1971	1			
Fletcher	September	1970	1			
Hinesburg	October	1978	1			
Hinesburg	October	1976	9			
Hinesburg	June	1975	1			
Johnson	October	1971	1			
Milton	August	1972	1			
Montpelier	June	1972	1			
Richmond	February	1972	1			
Salisbury	July	1986	1			
Shelburne	September	1979	1			
Shelburne	September	1971	1			

Shoreham	May	1980	2	Larrabee	43.85556, -73.3764	500
South Burlington	May	1977	1			
South Burlington	July	1976	10			
South Burlington	September	1975	1			
South Burlington	July	1968	1			
Waltham	September	1978	1			