

Missing

Nine-spotted Lady Beetle (*Coccinella novemnotata*)

Reward

Gratitude and thanks from the VAL team!

Last Seen: 1996 - Burlington and South Burlington VT

Habitat: Generalist, with a preference for “old” fields with shrubs and trees. Can be found in agricultural lands, meadows, gardens, forests, riparian zones. Associated vegetation includes birch, pine, spruce, maple, alfalfa, corn, potatoes, thistles, cherry, alder, willow, peas, poplar.



Head: Black with a pale, rectangular patch between the eyes

Pronotum: Black central patch, a pale rectangular patch on the anterolateral angles (front corners). These patches are connected by a thin pale margin.

Elytra (wing covers): Yellow to orange with 9 black spots (4 per elytron and one at the top, near the pronotum, which spans the suture). Suture (where the wings close) is dark to black. Sometimes spots are small or missing altogether.

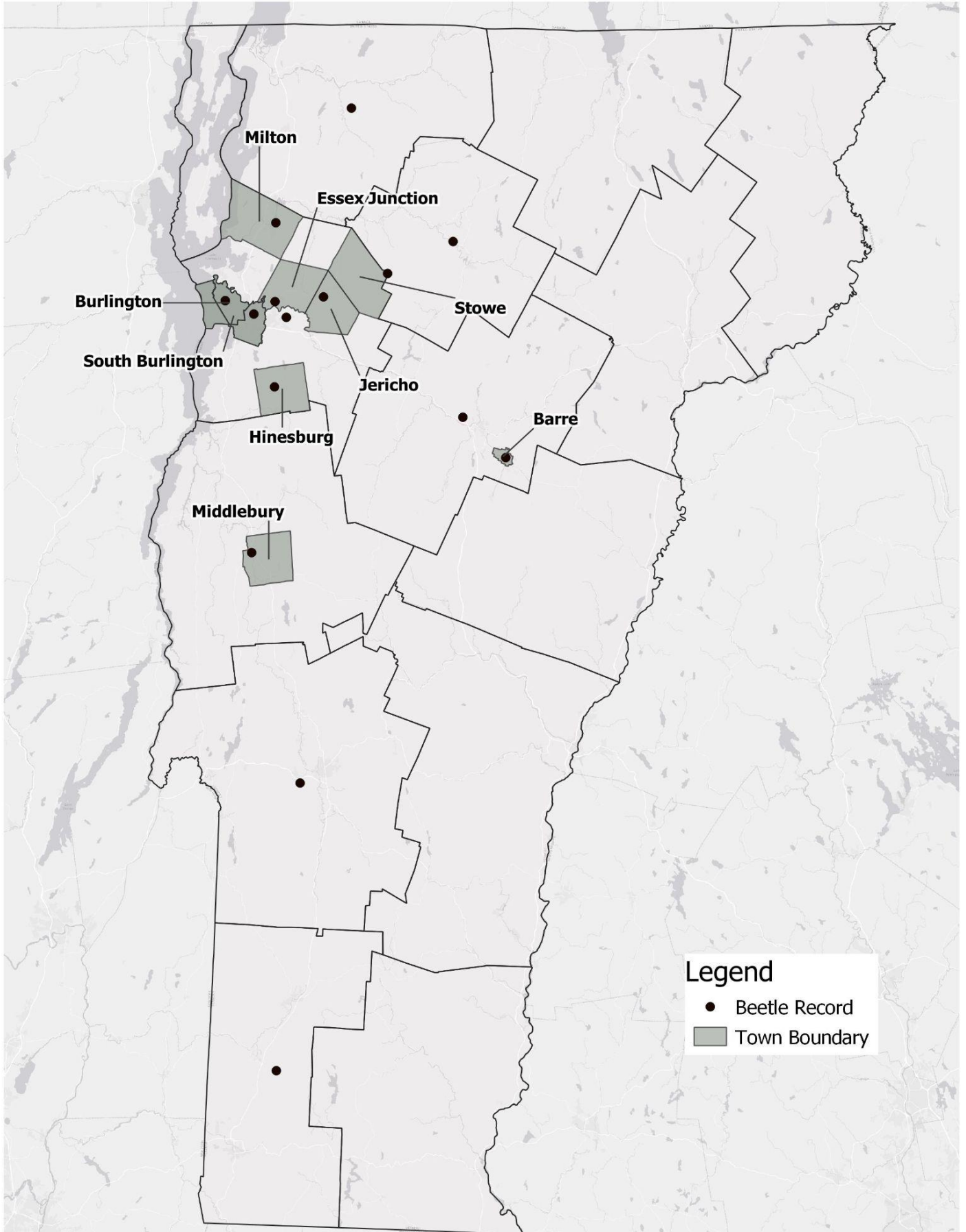
Overall Length and Appearance: 4.7 to 7 mm in length. Oval.

Easily confused with the 7-spotted and 11-spotted Lady Beetles. 9-spotted Lady Beetles have a pale margin across the front of their pronotum, separating them from the other species (spot numbers can vary for all 3 species).

If found:

Photograph the head, pronotum, and wing covers. Make sure you get different angles of the pronotum and wing covers so the pale margin on the pronotum can be clearly seen and the number of spots on my wing covers can be easily counted from the photo.

Map of Historic Records



List of Historic Records: Location and Date

Town	Month	Year	# Records	Locality	Coordinates	Uncertainty (m)
Barre	May	1971	1			
Burlington	October	1996	1			
Burlington	September	1972	1			
Burlington	September	1970	1			
Essex Junction	June	1976	1			
Hinesburg	June	1900	1			
Jericho	September	1996	1			
Middlebury	August	1968	1			
Milton	July	1970	1			
S. Burlington	June	1976	1			
S. Burlington	September	1971	1			
Stowe	June	1961	1	Mansfield Summit	44.54495, -72.8142	164