

Missing

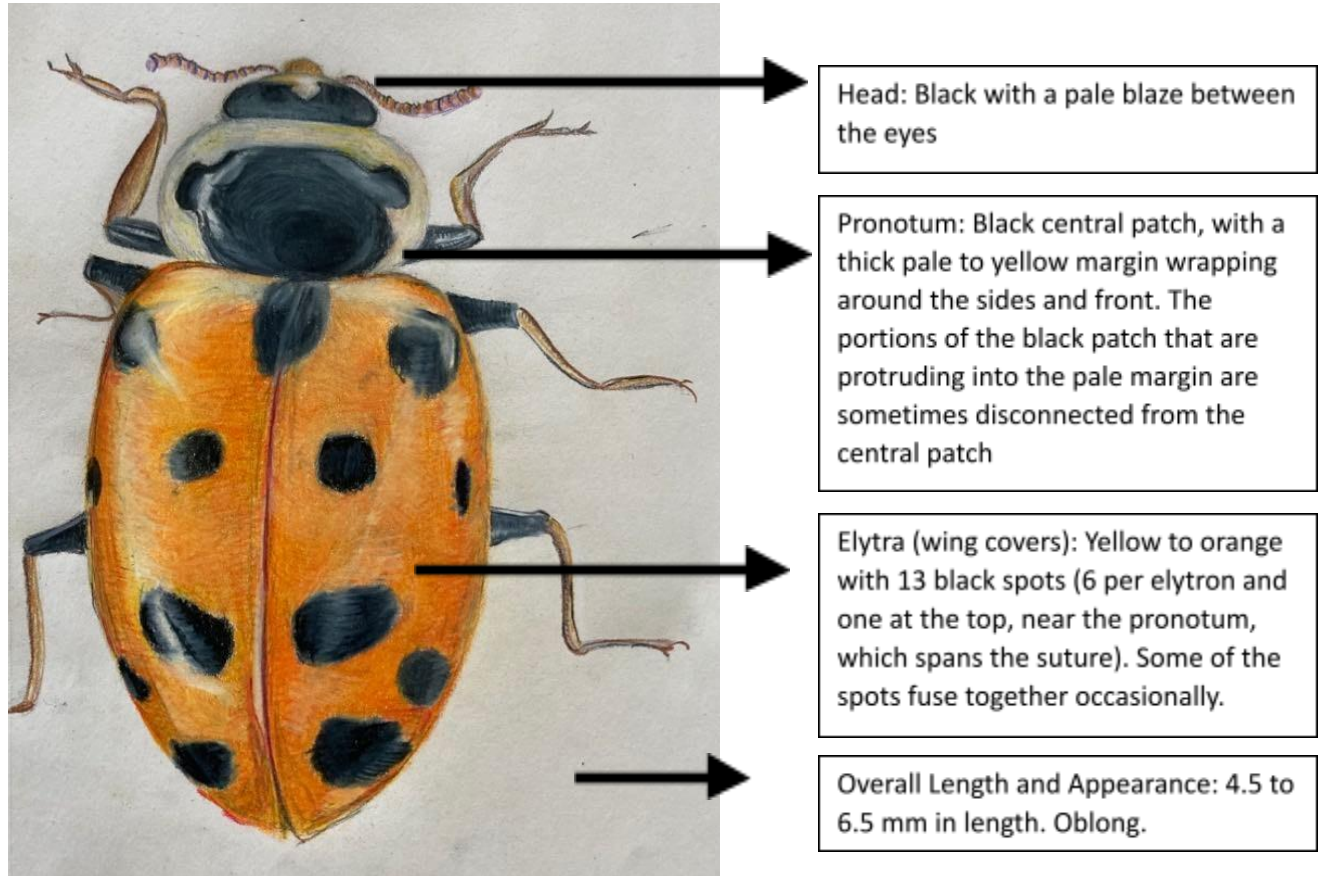
Thirteen-spotted Lady Beetle (*Hippodamia tredecimpunctata*)

Reward

Gratitude and thanks from the VAL team!

Last Seen: 1985 – Ethan Allen Park, Burlington, VT

Habitat: Meadows, gardens, agricultural fields, reed bed, and marshes.



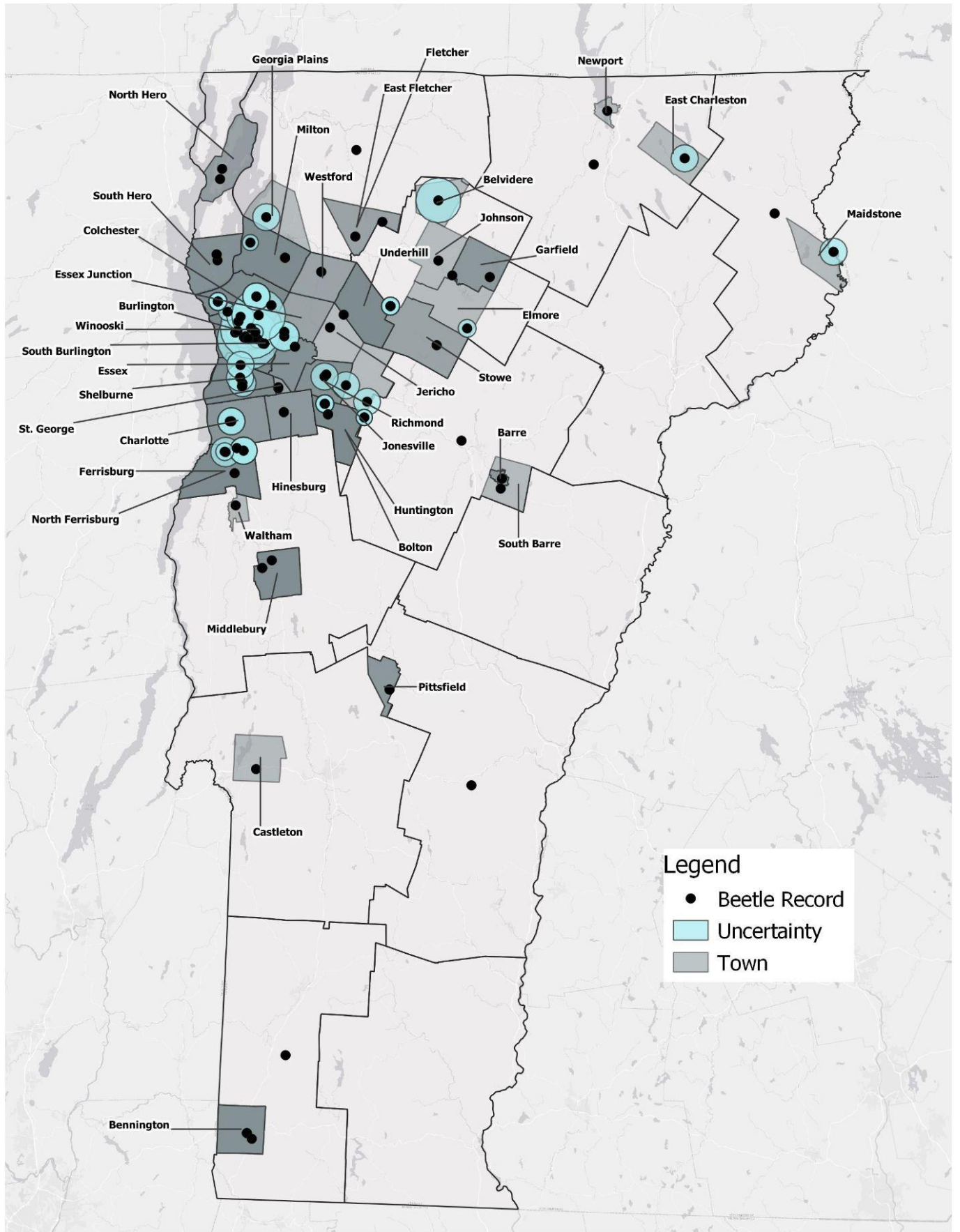
13-spotted Lady Beetles can be easily confused with the other ladybugs in the *Hippodamia* genus (Convergent, Glacial, Parenthesis, Five-spotted, and Variegated Lady Beetles). 13-spotted Lady Beetles have:

- A central pale patch on the head,
- a large black patch (often with two black spots connected or slightly separated from the large black patch) on the pronotum, and
- 13 black spots on the wing covers. Some of the spots may be touching each other, but there will be 13.

If found:

Photograph the head, pronotum, and wing covers. Make sure you get different angles of the wing covers so the number of spots can be easily counted from the photo.

Map of Historic Records



List of Historic Records: Location and Date

| Town | Locality | Coordinates | Month | Year | Number of Records | Uncertainty (m) |
|------------|-------------------------|---------------------|-----------|------|-------------------|-----------------|
| Barre | | | July | 1970 | 1 | |
| Barre | | | June | 1969 | 1 | |
| Barre | | | August | 1969 | 1 | |
| Belvidere | south of Long Pond | 44.7567, -72.6808 | September | 1969 | 1 | 5000 |
| Bennington | | | September | 1971 | 4 | |
| Bolton | | | July | 1975 | 2 | |
| Bolton | | | June | 1974 | 1 | |
| Burlington | Ethan Allen Park | 44.51088, -73.2396 | September | 1985 | 1 | 2289 |
| Burlington | | | June | 1984 | 1 | |
| Burlington | | | September | 1980 | 2 | |
| Burlington | | | September | 1979 | 3 | |
| Burlington | | | September | 1978 | 1 | |
| Burlington | Centennial Woods | 44.475716, -73.1857 | September | 1978 | 5 | 2000 |
| Burlington | UVM Jogging Course | 44.47588, -73.2121 | October | 1978 | 1 | |
| Burlington | | | October | 1977 | 2 | |
| Burlington | Lone Rock Point | 44.48825, -73.2482 | June | 1977 | 1 | 2000 |
| Burlington | Centennial Woods | 44.475716, -73.1857 | September | 1976 | 1 | |
| Burlington | Winooski River | 44.49781, -73.2038 | September | 1976 | 1 | |
| Burlington | Mouth of Winooski River | 44.53022, -73.2702 | September | 1976 | 1 | 2000 |
| Burlington | | | April | 1975 | 1 | |
| Burlington | Lake Champlain | 44.47883, -73.2233 | May | 1975 | 4 | 2289 |
| Burlington | | | September | 1974 | 13 | |
| Burlington | Centennial Woods | 44.475716, -73.1857 | September | 1974 | 2 | |
| Burlington | Battery Park | 44.48116, -73.2196 | September | 1974 | 1 | 2289 |
| Burlington | | | September | 1972 | 3 | |

| Town | Locality | Coordinates | Month | Year | Number of Records | Uncertainty (m) |
|-----------------|--------------------------|--------------------|----------------|------|-------------------|-----------------|
| Burlington | | | October | 1971 | 3 | |
| Burlington | | | October | 1970 | 5 | |
| Burlington | | | September | 1969 | 4 | |
| Burlington | | | October | 1967 | 2 | |
| Burlington | | | September | 1965 | 2 | |
| Burlington | | | October | 1964 | 5 | |
| Burlington | | | October | 1960 | 1 | |
| Burlington | UVM | 44.47773, -73.1966 | May | 1942 | 1 | 2289 |
| Burlington | UVM | 44.47773, -73.1966 | August | 1940 | 1 | 2289 |
| Burlington | | | September | 1890 | 1 | |
| Castleton | | | October | 1969 | 1 | |
| Charlotte | | | April | 1968 | 1 | |
| Charlotte | | | August | 1957 | 2 | |
| Colchester | McRae Farm | 44.52034, -73.2338 | October | 1981 | 1 | 3036 |
| Colchester | | | July/September | 1973 | 2 | |
| Colchester | | | May | 1972 | 1 | |
| Colchester | | | September | 1972 | 1 | |
| Colchester | | | October | 1970 | 1 | |
| Colchester | | | September | 1960 | 1 | |
| East Charleston | Marsh | 44.84023, -71.9879 | July | 1965 | 1 | 3036 |
| East Fletcher | | | August | 1965 | 1 | |
| Elmore | Bedell Brook Beaver Pond | 44.49927, -72.5995 | August | 1963 | 1 | 2000 |
| Essex | Winooski River | 44.48191, -73.1109 | September | 1976 | 2 | |
| Essex Junction | | | September | 1965 | 2 | |
| Ferrisburg | Lewis Creek Floodplain | 44.24783, -73.2722 | September | 1977 | 1 | 3303 |

| Town | Locality | Coordinates | Month | Year | Number of Records | Uncertainty (m) |
|------------------|---------------------|--------------------|-----------|------|-------------------|-----------------|
| Ferrisburg | | | September | 1965 | 1 | |
| Fletcher | | | September | 1970 | 1 | |
| Garfield | | | September | 1980 | 2 | |
| Georgia Plains | | | September | 1970 | 1 | |
| Hinesburg | | | June | 1977 | 1 | |
| Hinesburg | | | July | 1976 | 1 | |
| Huntington | Audubon Nature Area | 44.34656, -72.9965 | September | 1985 | 2 | 2000 |
| Huntington | Audubon Nature Area | 44.34656, -72.9965 | October | 1978 | 7 | 2000 |
| Huntington | | | October | 1978 | 1 | |
| Huntington | | | October | 1973 | 1 | |
| Huntington | | | October | 1969 | 5 | |
| Jericho | | | January | 1970 | 1 | |
| Johnson | | | September | 1969 | 1 | |
| Jonesville | Gillette Pond | 44.38394, -72.9376 | July | 1975 | 1 | 3036 |
| Maidstone | CT River | 44.64964, -71.5722 | July | 1965 | 1 | 3036 |
| Middlebury | | | September | 1984 | 1 | |
| Middlebury | | | August | 1968 | 1 | |
| Milton | | | October | 1978 | 2 | |
| Milton | | | September | 1970 | 7 | |
| Milton | | | September | 1969 | 1 | |
| Milton | | | August | 1968 | 3 | |
| N. Burlington | | | October | 1970 | 5 | |
| Newport | | | September | 1970 | 1 | |
| North Ferrisburg | Lewis Creek | 44.25098, -73.2221 | September | 1977 | 2 | 3036 |
| North Ferrisburg | Lewis Creek | 44.25098, -73.2221 | June | 1976 | 1 | |
| North Ferrisburg | | | October | 1976 | 2 | |

| Town | Locality | Coordinates | Month | Year | Number of Records | Uncertainty (m) |
|------------------|-----------------|--------------------|------------|------|-------------------|-----------------|
| North Hero | | | September | 1971 | 1 | |
| Pittsfield | | | July | 1969 | 3 | |
| Richmond | | | October | 1980 | 1 | |
| Richmond | | | October | 1972 | 1 | |
| Richmond | | | September | 1900 | 1 | |
| Shelburne | La Platte River | 44.39803, -73.2336 | September | 1981 | 1 | 3036 |
| Shelburne | La Platte River | 44.39803, -73.2336 | June | 1979 | 1 | 3036 |
| Shelburne | | | October | 1978 | 3 | |
| Shelburne | Lewis Creek | 44.24863, -73.2744 | September | 1978 | 1 | 2000 |
| Shelburne | Shelburne Bay | 44.42326, -73.2327 | September | 1975 | 1 | 3036 |
| Shelburne | | | July | 1972 | 1 | |
| Shelburne | | | September | 1970 | 1 | |
| Shelburne | | | October | 1969 | 4 | |
| Shelburne | | | September | 1967 | 1 | |
| Shelburne | | | October | 1966 | 2 | |
| Shelburne | | | July | 1962 | 2 | |
| Shelburne | | | November | 1961 | 1 | |
| South Barre | | | September | 1969 | 1 | |
| South Burlington | | | September | 1978 | 1 | |
| South Burlington | | | May + July | 1976 | 33 | |
| South Burlington | | | June | 1975 | 2 | |
| South Burlington | | | Aug./Oct. | 1973 | 3 | |
| South Burlington | | | April | 1972 | 1 | |
| South Burlington | | | May/ Sept. | 1971 | 2 | |
| South Burlington | | | September | 1968 | 2 | |
| South Burlington | | | October | 1966 | 1 | |
| South Burlington | | | August | 1965 | 3 | |

| Town | Locality | Coordinates | Month | Year | Number of Records | Uncertainty (m) |
|-------------|------------------|--------------------|-----------|------|-------------------|-----------------|
| South Hero | | | May | 1972 | 1 | |
| South Hero | | | July | 1970 | 1 | |
| South Hero | | | September | 1965 | 2 | |
| St. George | | | September | 1970 | 1 | |
| Stowe | Mansfield Summit | 44.54366, -72.8143 | August | 1974 | 1 | |
| Stowe | | | September | 1970 | 1 | |
| Stowe | Mansfield Summit | 44.54366, -72.8143 | July | 1966 | 5 | 2000 |
| Stowe | | | July | 1913 | 1 | |
| Underhill | | | September | 1970 | 1 | |
| Waltham | | | September | 1978 | 1 | |
| Westford | | | August | 1970 | 1 | |
| Westford | | | September | 1969 | 1 | |
| White Haven | | | August | 1976 | 1 | |
| Winooski | Winooski River | 44.48949, -73.1919 | September | 1980 | 1 | 1762 |