

# Missing

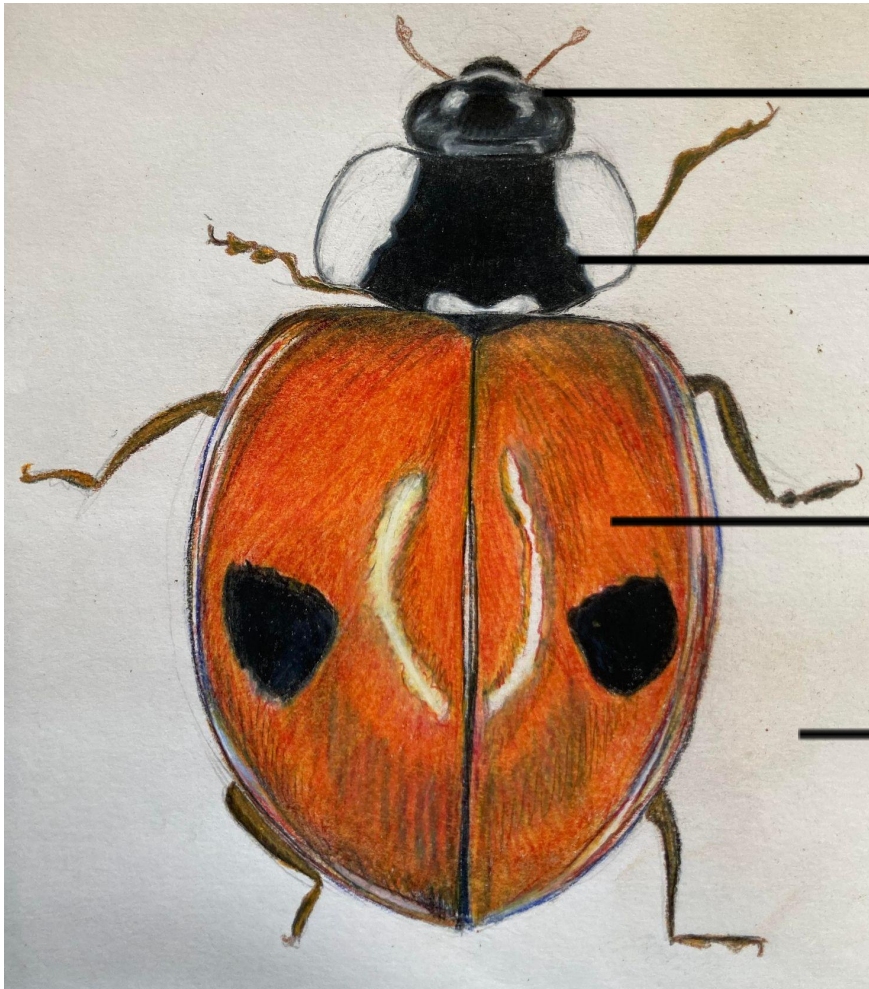
## Two-spotted Lady Beetle (*Adalia bipunctata*)

### Reward

Gratitude and thanks from the VAL team!

Last Seen: 1996 - Burlington, VT

Habitat: Wooded habitats seem to be preferred. Can be found in fields, meadows, agricultural crops, gardens, shrublands, and forests.



Head: Black with two pale dots between the eyes.

Pronotum: Black central patch, sometimes "M" shaped, extending across the pronotum. Sides of the pronotum are pale. Pronotum pattern can vary a lot.

Elytra (wing covers): Typically bright orange to red with two central black spots. Elytra can also be black with red spots, red with large black patches, or red with up to 14 spots.

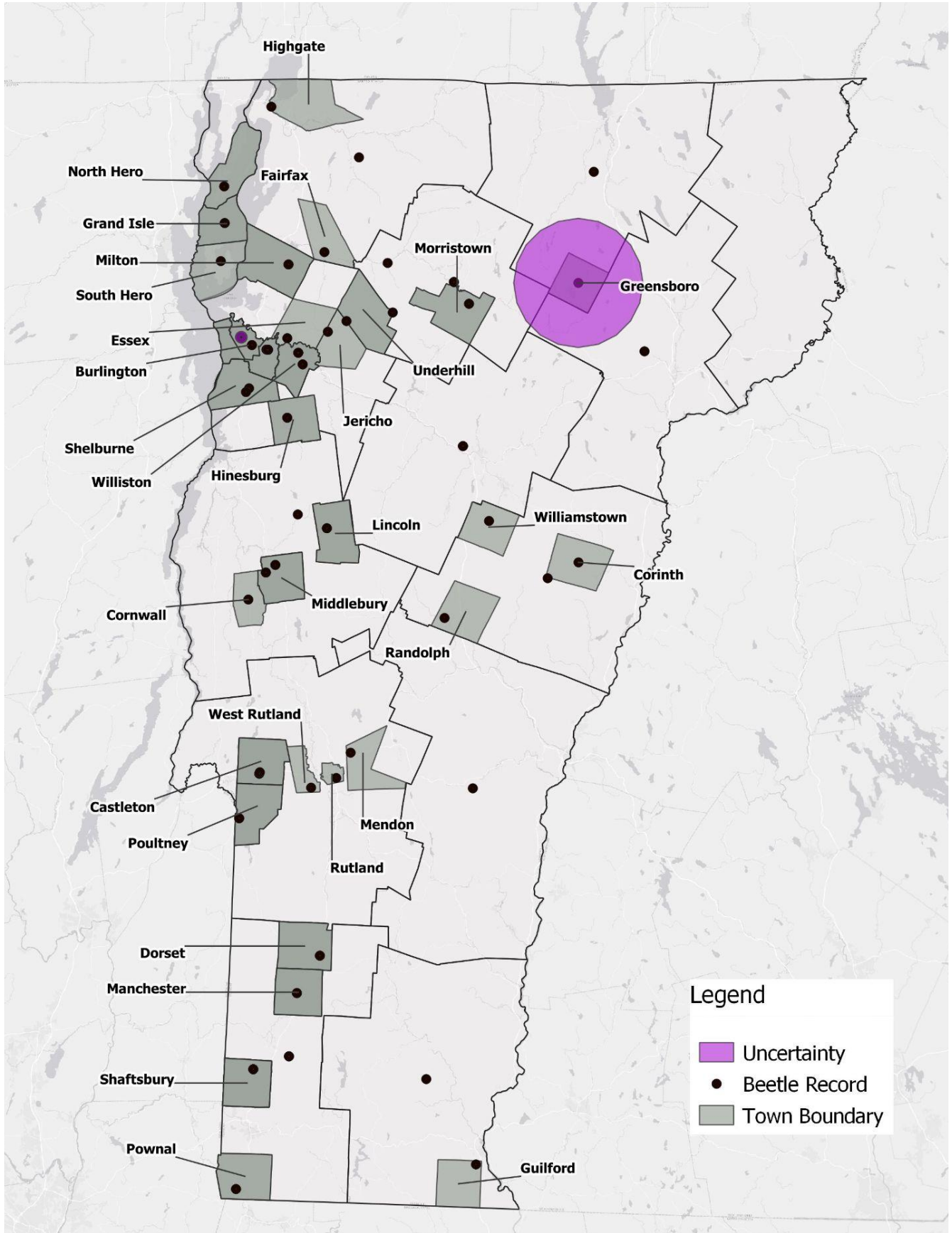
Overall Length and Appearance: 3.5 to 5.2 mm in length. Oval.

This species can be easily confused with many other species, including the Mountain, Twice-stabbed, Cream-spotted, and Asian Lady Beetles, due to its highly variable appearance.

### If found:

Please meticulously document any lady beetle that you think may be a Two-spotted Lady Beetle. Photograph the head, pronotum, wings, and underside of the beetle from multiple angles. If possible, please measure the beetle.

# Map of Historic Records



## List of Historic Records: Location and Date

| Town        | Month      | Year | # Records |  | Town          | Month      | Year | # Records |
|-------------|------------|------|-----------|--|---------------|------------|------|-----------|
| Bristol     | October    | 1967 | 1         |  | Manchester    | June       | 1980 | 1         |
| Burlington  | October    | 1996 | 1         |  | Manchester    | October    | 1973 | 1         |
| Burlington  | July       | 1984 | 1         |  | Manchester    | June       | 1972 | 1         |
| Burlington  | June       | 1980 | 1         |  | Manchester    | October    | 1971 | 1         |
| Burlington  | October    | 1979 | 2         |  | Mendon        | July       | 1976 | 1         |
| Burlington  | October    | 1978 | 5         |  | Middlebury    | October    | 1976 | 1         |
| Burlington  | August     | 1976 | 6         |  | Middlebury    | October    | 1970 | 1         |
| Burlington  | April      | 1975 | 3         |  | Milton        | July       | 1972 | 1         |
| Burlington  | September  | 1974 | 1         |  | Milton        | July       | 1970 | 1         |
| Burlington  | Sept.-Dec. | 1972 | 8         |  | Milton        | May        | 1968 | 1         |
| Burlington  | October    | 1971 | 1         |  | Morrisville   | April      | 1975 | 1         |
| Burlington  | April      | 1969 | 1         |  | Poultney      | Sept./Oct. | 1992 | 2         |
| Burlington  | April      | 1968 | 1         |  | Pownal        | August     | 1972 | 2         |
| Burlington  | November   | 1962 | 1         |  | Randolph      | March      | 1968 | 1         |
| Castleton   | October    | 1965 | 4         |  | Rutland       | September  | 1972 | 1         |
| Corinth     | June       | 1975 | 1         |  | S. Burlington | August     | 1976 | 21        |
| Cornwall    | October    | 1972 | 1         |  | S. Burlington | May        | 1975 | 2         |
| East Dorset | June       | 1961 | 1         |  | S.Burlington  | June/July  | 1974 | 2         |
| East Dorset | June       | 1960 | 1         |  | S. Burlington | September  | 1990 | 1         |
| East Dorset | June       | 1958 | 1         |  | S.Burlington  | July       | 1977 | 2         |
| Essex       | May        | 1979 | 1         |  | Shaftsbury    | August     | 1972 | 1         |
| Fairfax     | October    | 1973 | 1         |  | Shaftsbury    | Sept./Oct. | 1965 | 5         |
| Grand Isle  | Sept./Oct. | 1985 | 3         |  | Shelburne     | October    | 1987 | 1         |
| Greensboro  | September  | 1971 | 1         |  | Shelburne     | November   | 1984 | 1         |
| Guilford    | October    | 1973 | 1         |  | Shelburne     | September  | 1971 | 1         |
| Highgate    | August     | 1985 | 1         |  | South Hero    | September  | 1985 | 1         |

|                |      |      |   |  |              |           |      |   |
|----------------|------|------|---|--|--------------|-----------|------|---|
| Hinesburg      | June | 1976 | 1 |  | Stowe        | October   | 1987 | 1 |
| Hinesburg      | May  | 1975 | 1 |  | Underhill    | October   | 1987 | 1 |
| Jeffersonville |      | 1971 | 1 |  | Williamstown | September | 1972 | 1 |
| Jericho        | June | 1983 | 1 |  | Williston    | September | 1972 | 1 |
| Lincoln        | May  | 1991 | 1 |  | Williston    | September | 1971 | 1 |
| Lincoln        | May  | 1980 | 1 |  |              |           |      |   |