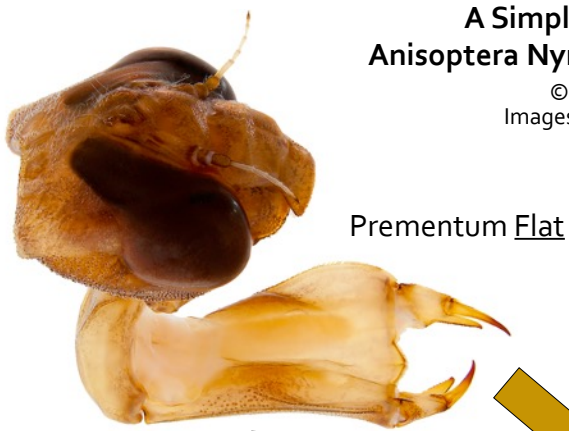


# A Simple Family Key to Anisoptera Nymphs of the Northeast

© Bryan Pfeffer  
Images © Marla Garrison



All Other Families  
(next page)

## Aeshnidae\*

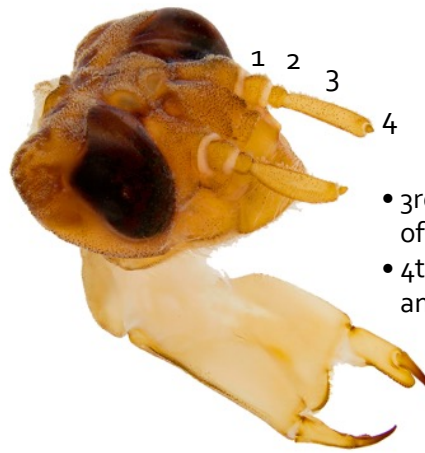


pentagonal head  
big, bulging eyes  
6 or 7 antenna segments, apical about same as preapical  
slender "waist"



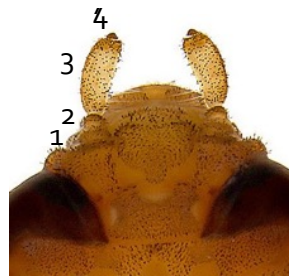
eyes more "D-shaped" on Anax

## Gomphidae



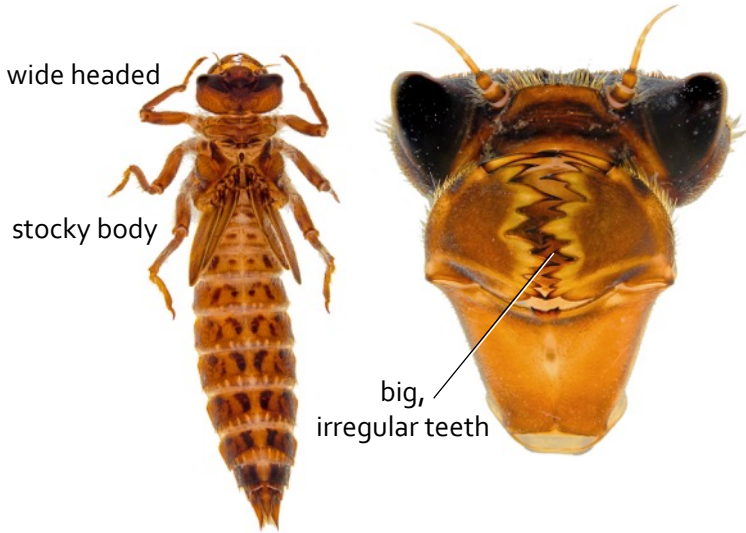
**Four antenna segments:**

- 3rd longer and unlike others, often flattened and club-like
- 4th shorter or narrower than 3rd, and sometimes really small

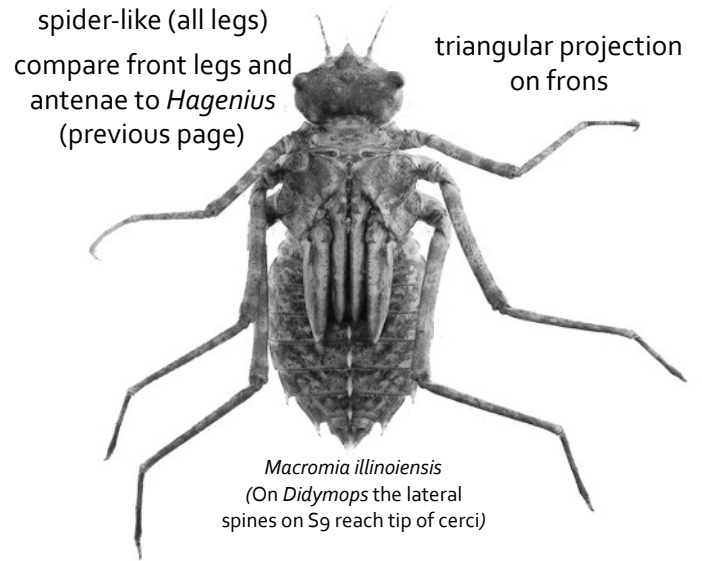


\* **Petaluridae**, in woodland seeps, has a short, squarish labium; labial palp with a stout spine at the base of the moveable hook

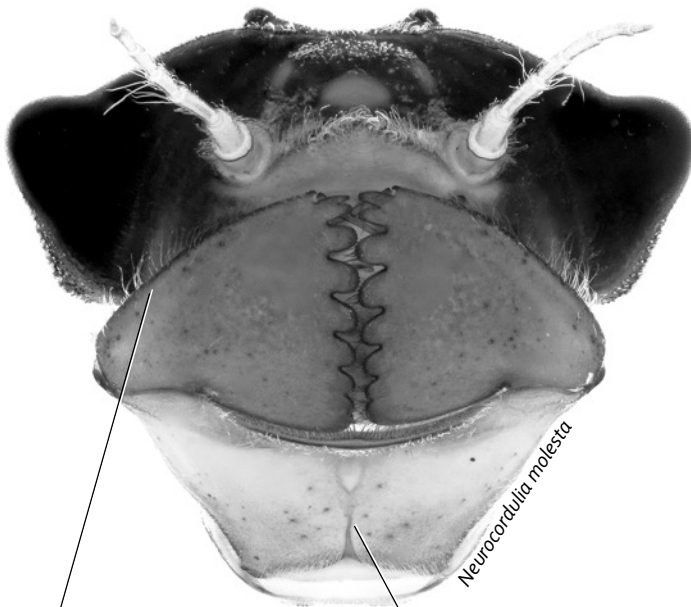
## Cordulegastridae



## Macromiidae

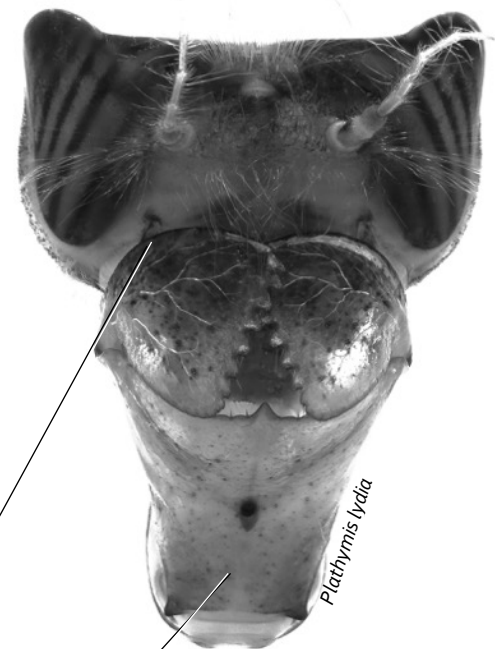


## Corduliidae



- prementum with ventral baso-medial groove
- labial palp with lots of pale, hair-like setae along outer dorsal edge from base to apex
  - cerci *generally* half or more as long as paraprocts
  - lateral spines of segment 9 longer than its mid-dorsal length
  - mid-dorsal hooks on abdomen often cultriform

## Libellulidae



- prementum without ventral baso-medial groove
- labial palp usually without pale setae along outer dorsal edge from base to apex
  - cerci *generally* half or less as long as paraprocts
  - if lateral spines of segment 9 longer than its mid-dorsal length then mid-dorsal hooks on abdomen are spine-like, stubby or absent (not cultriform)